

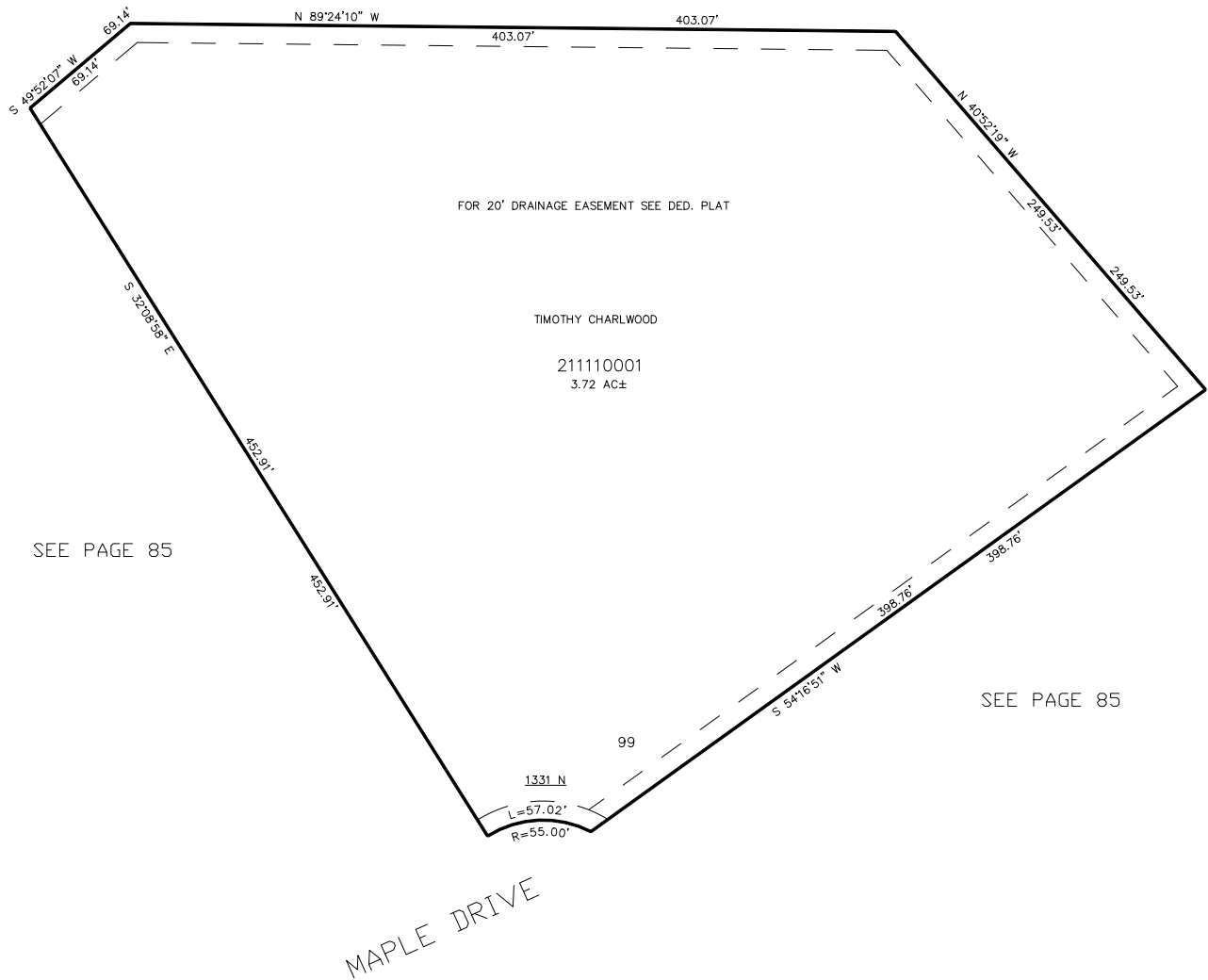
PART OF THE SE.1/4, OF SECTION 4, T.6N., R.2E., S.L.B. & M.
GREEN HILLS ESTATES PHASE No. 6 LOT 99 – 1ST AMENDMENT

IN WEBER COUNTY

TAXING UNIT: 231

SCALE 1" = 50'

SEE PAGE 85



10' UTILITY & DRAINAGE EASEMENTS EACH
SIDE OF PROPERTY LINES AS INDICATED
BY DASHED LINES EXCEPT AS OTHERWISE
SHOWN.

FOR COMPLETE ENG DATA SEE
ORIGINAL DEDICATION PLAT IN
BOOK 64, PAGE 21 OF RECORDS.